



NCFHCC GENERAL MEMBERSHIP MEETING

April 26, 2023

MEETING MINUTES

The North Central Florida HealthCare Coalition held its monthly meeting both in-person and virtually on April 26, 2023, at 1:30 via Zoom <https://nefrc-org.zoom.us/j/89168661472>

Documents provided to the NCFHCC Members via email:

Agenda; Validation of Board Members; Minutes from March 2023; Financial Report for March 2023; New Member Requests.

CALL TO ORDER

Due to technical difficulties between those attending the meeting virtually and in-person, the Secretary/Treasurer, Ms. DeKay, conducted the meeting. Both the Chair and Vice Chair were in attendance virtually. The meeting was called to order by the Secretary/Treasurer, Suzanne DeKay with the validation of a quorum, with the following Board members present:

EMS: Matt Ferguson

Public Health: Tom Moffses

Hospitals: Suzanne DeKay

At-Large Representative: Misty Woods

At-Large Representative: Lola Butler

Others in Attendance: See Zoom report attached.

Absent:

Long-Term Care: Heather Snellgrove

Emergency Management: Ralph Smith

At-Large Representative: Jason Long

Welcome & Introductions

Board Secretary/Treasurer, Suzanne DeKay welcomed everyone to the hybrid meeting. Ms. DeKay, welcomed the new member in the meeting room, Ms. Shelley Grimes.

Approval of Minutes

The minutes from March 2023 were provided to Board members via electronic mail and April Meeting Packet.

The Secretary/Treasurer called for a motion of approval. Mr. Moffses moved approval; Ms. Woods seconded; Motion carried.

FINANCIAL

Finance Report

Ms. Suzanne DeKay presented the finance report for March 2023.

The Secretary/Treasurer called for a motion of approval. Ms. Woods moved approval; Mr. Moffses seconded; Motion carried.

Expenditure Requests - None

MANAGEMENT AND ADMINISTRATION

- **EMAG 2023 Recap** 18 individuals from across the three HCCs in the Alliance attended the EMAG conference in Savannah, April 12-14th. All attendees reported enjoying the various breakout sessions. The conference also provided the opportunity for different members to interact with members of other Coalitions. EMAG continues to be an advantageous conference for Coalition members.
- **Project Funding Update** Staff reports all but two projects have received their equipment. Two Marion County projects are procuring their equipment but remain on track to submit for reimbursement prior to the end of the fiscal year. All other projects have submitted their reimbursement paperwork or are in the process of submitting their paperwork.
 - ACFR reports they have received the two training manikins and are training their staff on them. ACFR is working on establishing methods to share the manikins and training with other organizations within the Alliance.
 - UF Health Gainesville reports the success of the reverse osmosis water systems they purchased. The reverse osmosis water system(s) is deployable if a different member organization needs it.
 - The Center for Independent Living reported the three expos delivered through Coalition training funding were all a success. Expos were held in Marion, Flagler, and Alachua counties. The Center for Independent Living hopes to continue providing these expos for individuals with disabilities and local partners.

PRESENTATIONS

- **CDBG: North Florida Resiliency Plan for Health and Medical Lifeline** Mr. Eric Anderson, from the Northeast Florida Regional Council, provided a presentation regarding the work being done on CDBG: North Florida Resiliency Plan for Health and Medical Lifeline. This program evaluates several climate exposures on the healthcare facilities in the 18-county region of the Region 3 Healthcare Coalition Alliance. As this program moves forward, program staff will begin local workshops to discuss with stakeholders what their threats are based on the hazards being evaluated within this grant. UF Health Jacksonville has agreed to be the pilot facility to

understand what their footprint specific climate exposure is. As this program progresses, staff will survey the HCC membership twice; one time on infrastructure impacts and the second survey will evaluate the impacts on the healthcare delivery system from the findings of the analysis.

BUSINESS

New Members

Two (2) new member requests were presented for membership. As both new members were from the Northeast HCC, and had already been approved, a vote was not necessary by the North Central Board.

HVA Gaps Project

The Alliance Board has identified pre-hospital pediatric surge management to be a prioritized, regional gap. The State has approved the Coalition's request to use the additional HVA gap funding to purchase equipment to help fill this regional gap. Staff are collecting each county's needs to determine the number of pieces of equipment needed to be ordered. The form for EMS agencies to complete closes April 26th, and staff will use this information to calculate how much equipment can be purchased.

TRAINING AND EXERCISE

Active Threat Virtual TTX Offerings

Two offerings of an active threat virtual tabletop exercise will be provided through the Coalition on May 8th and May 16th. Both offerings will be from 1:00 to 4:30 PM. The training flyer and registration information was shared with Coalition members through ReadyOp and it is posted on the Alliance website. As of now, the first offering is full, and there are only a few seats open in the second offering.

Statewide Radiation Surge Tabletop Exercise

In partnership with the State and the HCCs across the state, there will be a virtual, tabletop exercise on May 17th from 9:00 AM to 1:00 PM, to test the new Alliance Radiation Surge Annex. This statewide exercise will provide the opportunity for regional breakout groups for each region to discuss their threats, capabilities, and gaps. There will be statewide report-outs, to see how different regions would respond, following the regional breakout. The flyer and registration information have been emailed to the Alliance membership and have been posted to the Alliance website.

PER-320 Training

Staff report they have finalized with TEEEX the dates and registration links for this course delivery. It is a full-day, in-person training. Individuals who attend this will train on PPE, with donning and doffing and other considerations during a biological event. The course flyer with more information and registration links will be attached to the meeting minutes and is on the Alliance website. Staff encourage members to share this training opportunity, as if there are not 26 registrants in each offering, they will not provide the training.

Pediatric Surge TTX

Staff shared the upcoming, in-person pediatric surge tabletop exercise opportunity to be held on July 25, 2023, from 12:30 to 4:00 PM. The exercise is geared towards ESF-8 partners – public health, hospitals,

EMS, emergency management, etc. The *Save the Date* has been shared with the Alliance membership. The exercise is projected to be hosted at the FDLE building in Jacksonville, updated information will be shared with the Alliance once it is received by staff.

MEMBER REPORTS AND OPEN DISCUSSION

Hospitals – Ms. Suzanne DeKay, from UF Health Gainesville, reports there is nothing new to report. Reports they have installed a weapons detection system at the adult emergency department walk-in entrance. This system has been operational for about one month, and they have already detected 26 guns, over 100 knives, and 65 other unidentified weaponry.

Emergency Management – Nothing to report.

Public Health –

Mr. Aurelio Perea, from DOH-Suwannee, reports the helpfulness of the CDBG presentation from the meeting, and requested a copy of the slide deck be sent out following the meeting.

Mr. Tom Moffses, from DOH-Columbia/Hamilton, shared the Region 2 RERA, Sam MacDonnell's retirement celebration is May 18th in Tallahassee. Reports he will share the invitation with HCC staff so they can distribute to those interested in attending.

Ms. Freda Vaughn, Region 3 RERA, shared the weather report provided by the National Weather Service issuing severe thunderstorms for the North Central and Northeast areas that afternoon.

EMS – Ms. Misty Woods from Alachua County Fire Rescue report they continue to have issues related to truck shortages and not having chassis for ambulances. Reports staffing issues have stabilized for ACFR.

Long-Term Care – Nothing to report.

At-Large Representatives – Nothing to report.

Mr. Kevin Towles, from the Center for Independent Living, states how helpful the expos are for local partners and for the individuals that they serve. Reports they are trying to increase engagement with DOH-Alachua and would appreciate any contact recommendations.

CLOSING REMARKS AND ADJOURN

The Secretary/Treasurer announced the next meeting will be a virtual only meeting on May 24, 2023, at 1:30 via Zoom.

With no additional business, the meeting was adjourned.



Attendance Recorded in ReadyOp: General Membership Meeting – April 26, 2023

First Name	Last Name	Facility Name	Facility Type
Suzanne	DeKay	UF Health Gainesville	Acute Care Hospitals (Core HCC Member)
Jim	Lyons	FDOH – Bradford/Union	Public Health Agencies (Core HCC Member)
Lola	Butler	FDOT – District 2	Emergency Management Organizations (Core HCC Member)
Shane	Ross	FDOH – Columbia/Hamilton	Public Health Agencies (Core HCC Member)
Kevin	Towles	Center for Independent Living	Non-governmental organizations (e.g. American Red Cross, voluntary organizations active in disaster, amateur radio operators, etc.)
Misty	Woods	Alachua County Fire Rescue	EMS (Including inter-facility and other non-EMS patient transport systems; Core HCC Member)
Freda	Vaughn	FDOH	Public Health Agencies (Core HCC Member)
Caleb	Hardee	FDOH – Levy/Gilchrist/Dixie	Public Health Agencies (Core HCC Member)
Robert	Linnens	FDOH – Alachua	Public Health Agencies (Core HCC Member)
Aurelio	Perea	FDOH – Suwannee	Public Health Agencies (Core HCC Member)
Matthew	Ferguson	Dixie County EMS	EMS (Including inter-facility and other non-EMS patient transport systems; Core HCC Member)
Eric	Anderson	Northeast Florida Regional Council	Other
Tom	Moffses	FDOH – Columbia/Hamilton	Public Health Agencies (Core HCC Member)
Casey	Ditter	FDOH – Lafayette	Public Health Agencies (Core HCC Member)
Shelley	Grimes	Nursecore Home Healthcare	Home Health Agencies (Including home and community-based services)



Community Development Block Grant Mitigation Program (CDBG-MIT)

Hurricane Irma

Rebuild Florida Mitigation General Planning Program Grant

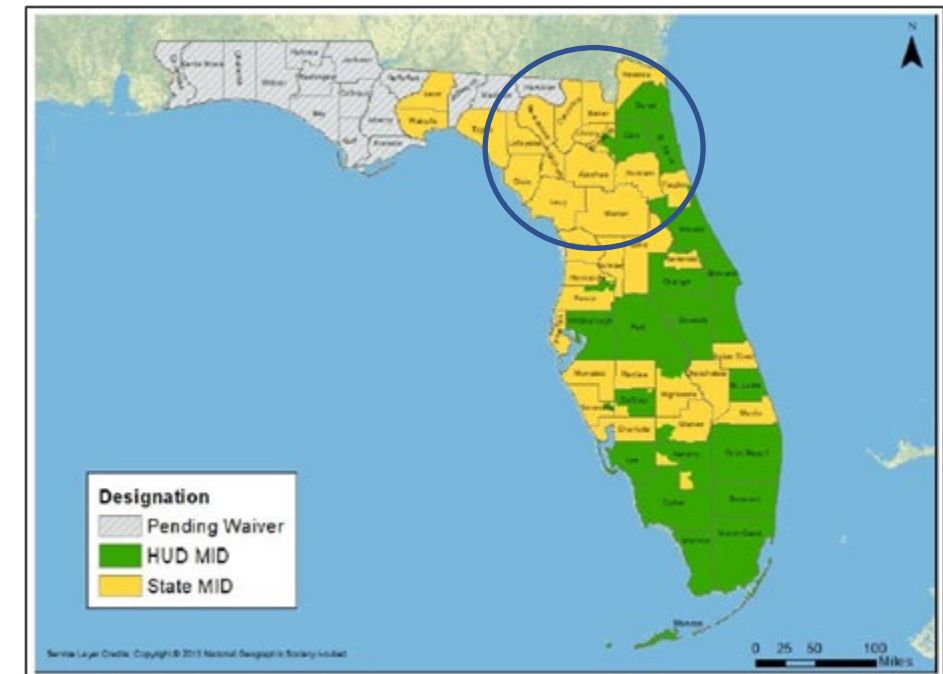
(\$20,000,000 – Application due 7/31/2020)

<http://floridajobs.org/rebuildflorida/mitigation>

- The Planning Grant targets many counties and municipalities within the Region 3 - Healthcare Coalition Alliance.
- The grant provides special consideration for planning projects to support the Health and Medical Lifeline.
- If awarded, implementation of this planning grant would encompass all counties in the Region 3 – Healthcare Coalition Alliance.

North Florida Resiliency Plan for the Health and Medical Lifeline

- Use existing HCC Plans and guidance provided in the (HHS) Sustainable and Climate Resilient Health Care Facilities Toolkit.
- The Toolkit was developed through a public-private partnership with the health care industry. By focusing specifically on improving health care infrastructure resilience, this framework aims to help a broad range of health care facilities and organizations **improve their ability to function in the face of climate change and extreme weather events** such as tropical cyclones, flooding, and severe storms.



3-Year Delivery with 5 Elements

Year 1:

- **Element 1: Climate Risks and Community Vulnerabilities Assessment**
- **Element 2: Healthcare Infrastructure Map Series & Analysis of Climate Exposure**

Year 2:

- Element 3: Assessment of Healthcare Infrastructure Protection and Resilience (Climate Sensitivity), Healthcare Facility Outreach, and Mitigation Strategies
- Element 4: Assessment of Essential Clinical Care Service Delivery, Healthcare Facility Outreach, and Mitigation Strategies

Year 3:

- Element 5: Complete the North Florida Resiliency Plan for the Health and Medical Lifeline with Community Feedback

ELEMENT 1 CHECKLIST

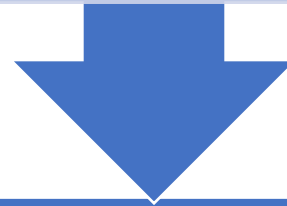
CLIMATE RISKS AND COMMUNITY VULNERABILITIES ASSESSMENT

Conduct Climate Vulnerability Assessment

Understanding Climate Risks

Assess Community Preparedness
and Vulnerabilities

Prepare a Climate Risk Assessment
and Vulnerability Analysis



Update existing Hazards Vulnerability Assessment (HVA) and Jurisdictional Risk Assessment (JRA) to include information from Climate Risks and Vulnerability Assessment.

Element 2: Healthcare Infrastructure Map Series & Analysis of Climate Exposure

A	Develop a map series of healthcare facilities in the Region 3 – Healthcare Coalition Alliance.
B	Develop a 100 & 500-year flood map series.
C	Develop a sea level rise map series with various scenarios.
D	Develop a storm surge map series with various storm surge scenarios.
E	Complete a Climate Exposure Analysis on healthcare facilities using data and mapping gathered during Element 1.

Climate Exposure Analysis

This Climate Exposure Analysis (CEA) examines the inundation caused by various storm surge, flooding, and sea level rise scenarios and the resulting exposure to water of the county, its healthcare facilities, and its roads that provide access to these healthcare facilities.

Exposure Level Terminology	Percent Exposed	Color
Very high	90-100%	Purple
High	66-90%	Red
Moderate	33-66%	Orange
Low	10-33%	Yellow
Very low	0-10%	Green

A photograph of a cloudy sky over a stone wall and a paved plaza. The sky is filled with large, dark, grey clouds, with a hint of light breaking through near the horizon. Below the sky is a low, grey stone wall. In the foreground, there is a paved plaza made of large, light-grey rectangular tiles.

Climate Exposure Analysis & Mapping Alachua County

Exposure Summary

- Alachua County can expect to be moderately exposed to flooding, with no exposure to storm surge or sea level rise.
- Alachua County healthcare facilities can expect to be moderately exposed to flooding, with 21 out of 49 facilities exposed.
- Roads near hospitals in Alachua County are expected to be moderately exposed during flood events.

Exposure Summary Table

The following table provides a brief overview of Alachua County’s vulnerability to the predicted exposure elements of storm surge, flooding, and sea level rise.

Exposure Level Terminology	Percent Exposed	Color
Very High	90-100%	Purple
High	66-90%	Red
Moderate	33-66%	Orange
Low	10-33%	Yellow
Very low	0-10%	Green

Exposure Element	Level	% of Developed Land in County Exposed (Total Acres: 96,338)	% of Healthcare Facilities Exposed (Total Facilities: 49)	% of Roads Exposed within 1 mile of hospitals
Storm Surge	Category 1	N/A	N/A	N/A
Storm Surge	Category 2	N/A	N/A	N/A
Storm Surge	Category 3	N/A	N/A	N/A
Storm Surge	Category 4	N/A	N/A	N/A
Storm Surge	Category 5	N/A	N/A	N/A
Floodplain	100-year	49.1%	42.9%	25.1%
Floodplain	500-year	49.6%	42.9%	36.7%
Sea Level Rise	Intermediate Low and Intermediate High 2040 (1ft)	N/A	N/A	N/A
Sea Level Rise	Intermediate Low 2070 (2ft)	N/A	N/A	N/A
Sea Level Rise	Intermediate High 2070 (3ft)	N/A	N/A	N/A

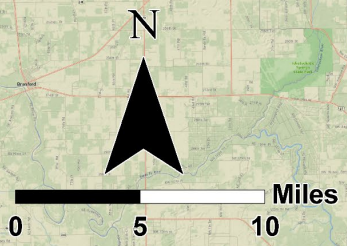
Overland Flooding 100 & 500-year Flood Event Exposure Analysis

Floodplain	100-year	42.9%
Floodplain	500-year	42.9%

In a 100-year and 500-year flood event, 50% of hospitals, almost half of the assisted living facilities and nursing homes, and most of the intermediate care facilities for the developmentally disabled would be impacted.

Number of Facilities within Floodplain			
Facility Type	Total Facilities	100-year Flood	500-year Flood
Assisted Living Facilities	11	5	5
Dialysis Centers	12	2	2
Hospice	1	0	0
Hospitals	6	3	3
Intermediate Care Facility for Developmentally Disabled	8	7	7
Nursing Homes	9	4	4
Residential Treatment Centers for Children	0	0	0
Residential Treatment Facilities	2	0	0
Total	49	21	21

Alachua County Floodplain Impacts to Healthcare Facilities

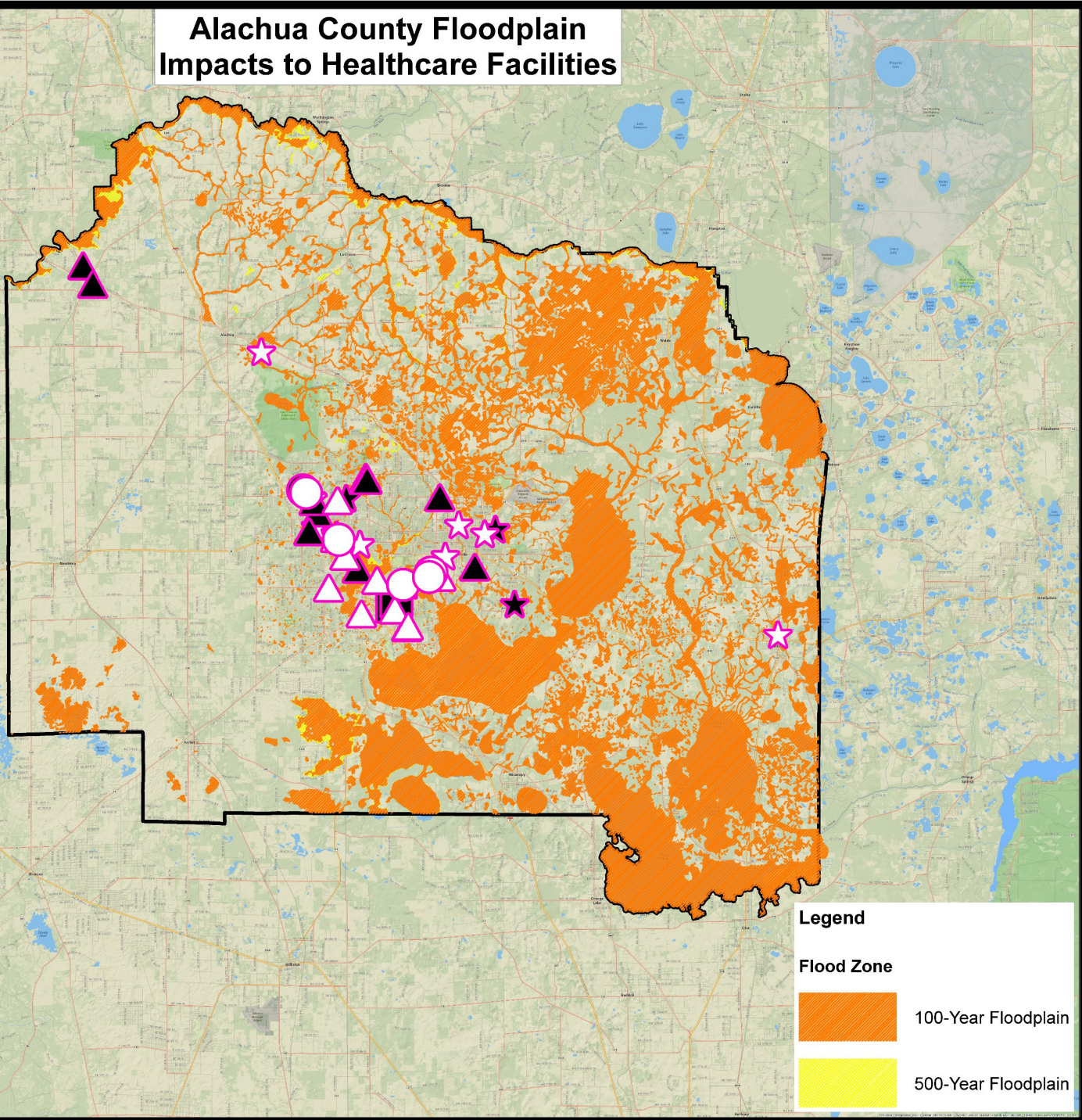


**Legend
Healthcare Facilities**

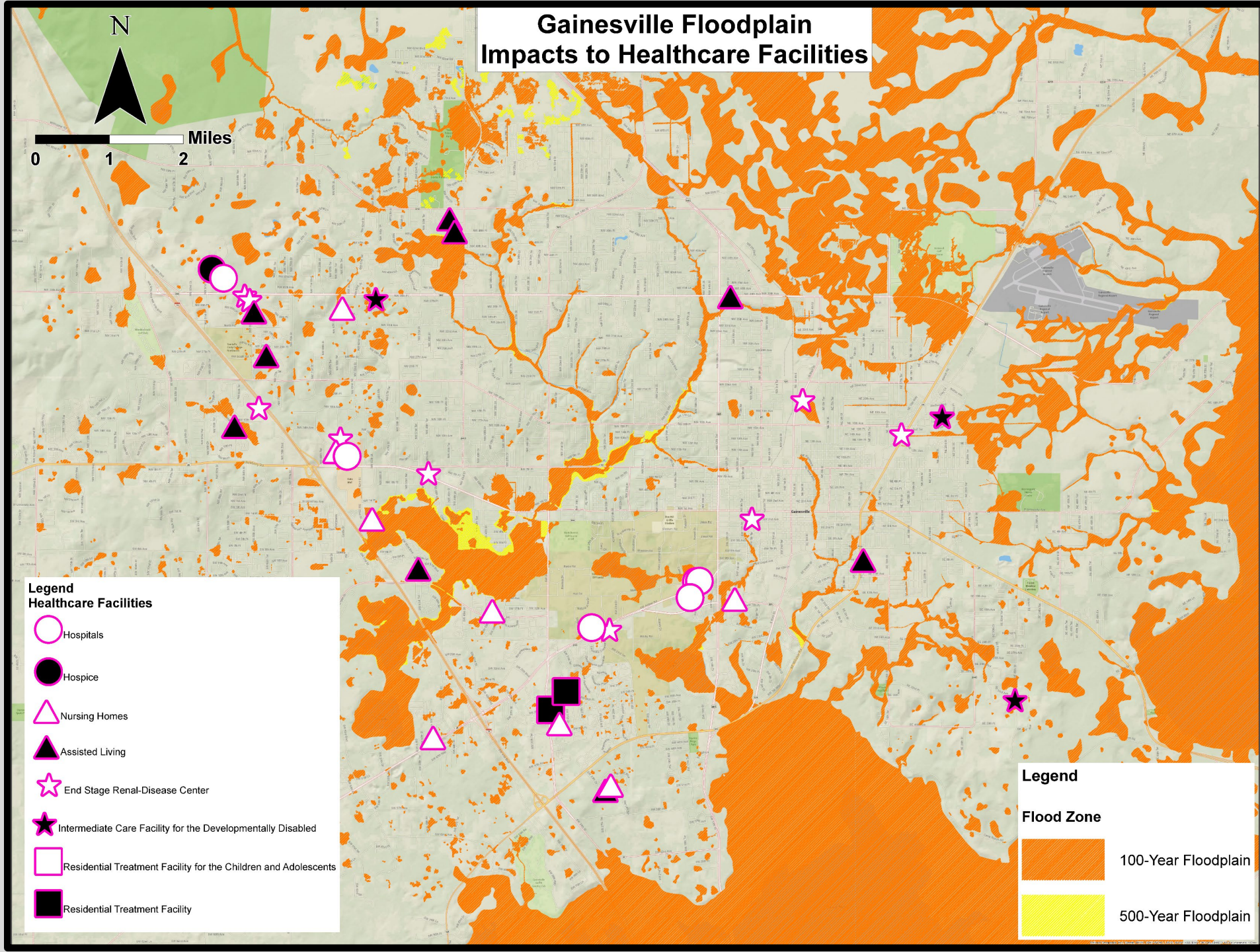
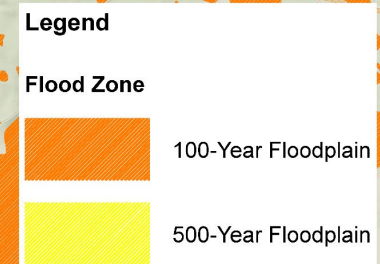
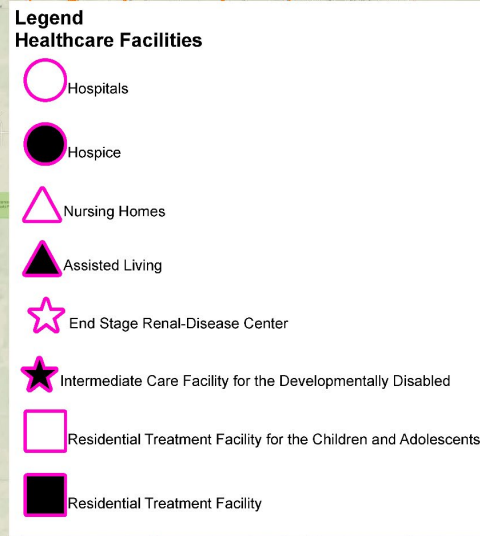
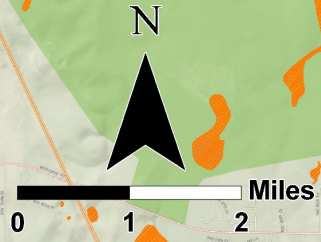
- Hospitals
- Hospice
- Nursing Homes
- Assisted Living
- End Stage Renal-Disease Center
- Intermediate Care Facility for the Developmentally Disabled
- Residential Treatment Facility for the Children and Adolescents
- Residential Treatment Facility

**Legend
Flood Zone**

- 100-Year Floodplain
- 500-Year Floodplain



Gainesville Floodplain Impacts to Healthcare Facilities



3-Year Delivery with 5 Elements

Year 1:

- Element 1: Climate Risks and Community Vulnerabilities Assessment
- Element 2: Healthcare Infrastructure Map Series & Analysis of Climate Exposure

Year 2:

- Element 3: Assessment of Healthcare Infrastructure Protection and Resilience (Climate Sensitivity), Healthcare Facility Outreach, and Mitigation Strategies
- Element 4: Assessment of Essential Clinical Care Service Delivery, Healthcare Facility Outreach, and Mitigation Strategies

Year 3:

- Element 5: Complete the North Florida Resiliency Plan for the Health and Medical Lifeline with Community Feedback

A photograph of a cloudy sky over a stone wall and a paved plaza. The sky is filled with large, dark, grey clouds, with a hint of yellow light from the sun breaking through near the horizon. Below the sky is a low, grey stone wall. In the foreground, a paved plaza made of large, light-grey rectangular tiles extends towards the wall.

Climate Exposure Analysis & Mapping St. Johns County

Exposure Summary

- St. Johns County can expect to be moderately to highly exposed to storm surge and flooding, with low exposure to sea level rise.
- St. Johns County healthcare facilities can expect to be moderately exposed to storm surge and flooding, with between 11 and 17 facilities exposed, depending on the category.
- While a low percentage of healthcare facilities can expect to be exposed to sea level rise, at least 1 hospital out of the 3, would be exposed in all 3 scenarios (1 ft, 2 ft, and 3 ft).

Exposure Summary Table

The following table provides a brief overview of St. Johns County’s vulnerability to the predicted exposure elements of storm surge, flooding, and sea level rise.

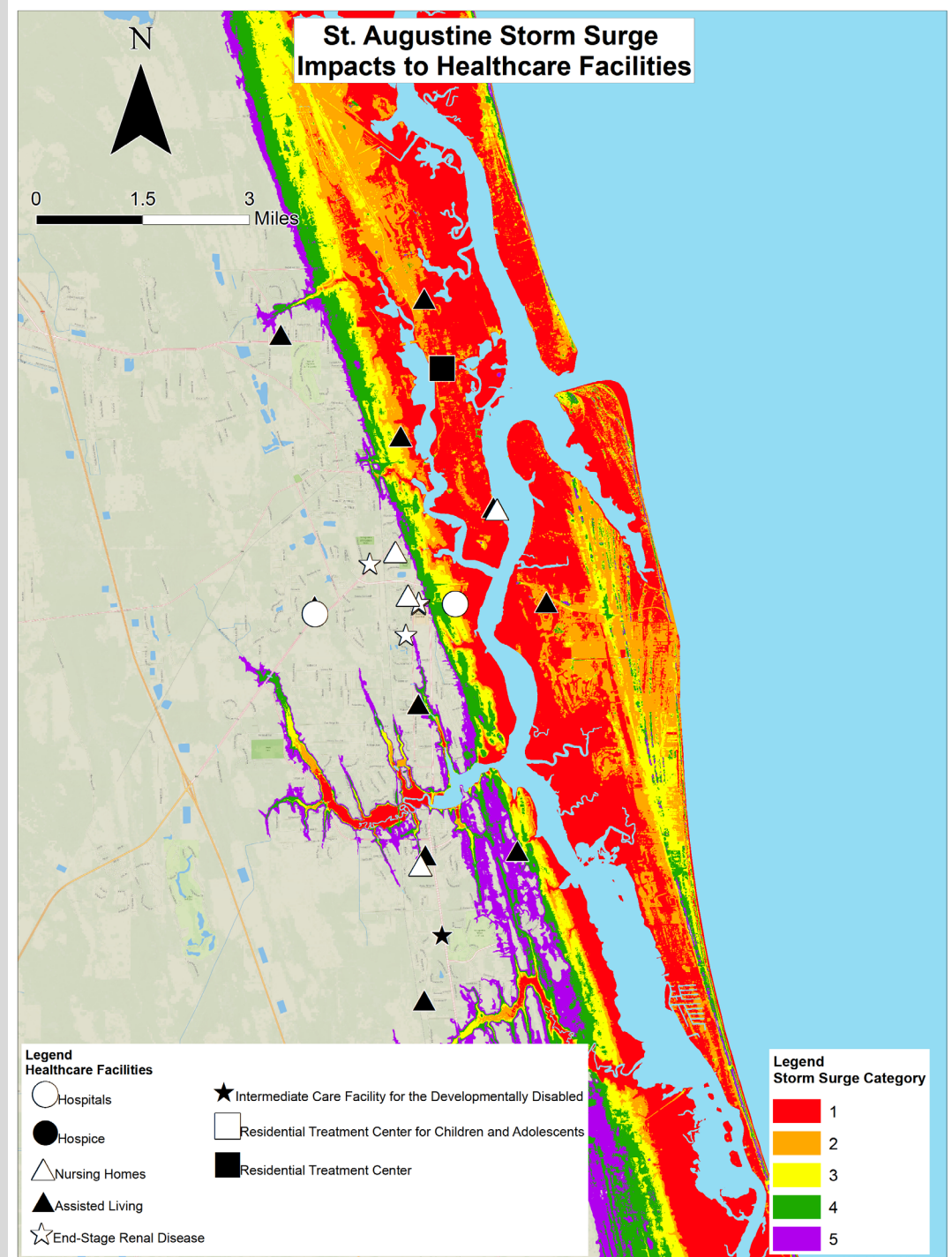
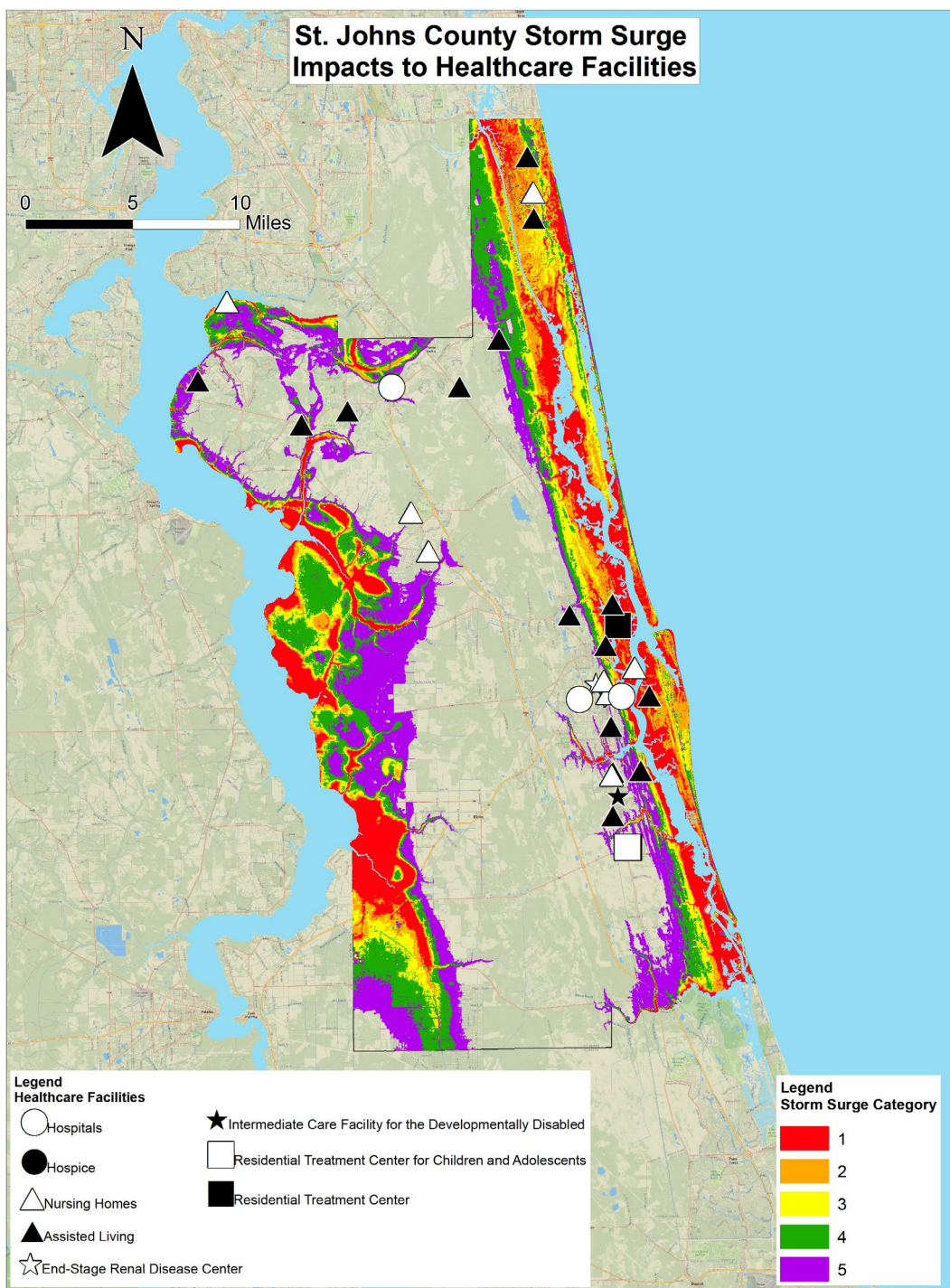
Exposure Level Terminology	Percent Exposed	Color
Very high	90-100%	Purple
High	66-90%	Red
Moderate	33-66%	Orange
Low	10-33%	Yellow
Very low	0-10%	Green

Exposure Element	Level	% of Developed Land in County Exposed (Total Acres: 68,420)	% of Healthcare Facilities Exposed (Total Facilities: 38)	% of Roads Exposed within 1 mile of hospitals
Storm Surge	Category 1	48.1%	28.9%	9.2%
Storm Surge	Category 2	58.8%	34.2%	34.7%
Storm Surge	Category 3	64.2%	34.2%	34.7%
Storm Surge	Category 4	71.7%	36.8%	66.1%
Storm Surge	Category 5	77.0%	44.7%	66.1%
Floodplain	100-year	73.4%	43.2%	62.3%
Floodplain	500-year	76.8%	43.2%	73.4%
Sea Level Rise	Intermediate Low and Intermediate High 2040 (1 ft)	28.1%	13.2%	9.2%
Sea Level Rise	Intermediate Low 2070 (2ft)	29.3%	13.2%	9.2%
Sea Level Rise	Intermediate High 2070 (3ft)	36.1%	23.7%	9.2%

Storm Surge Exposure Analysis

Exposure Element	Level	% of Healthcare Facilities Exposed (Total Facilities: 38)
Storm Surge	Category 1	28.9%
Storm Surge	Category 2	34.2%
Storm Surge	Category 3	34.2%
Storm Surge	Category 4	36.8%
Storm Surge	Category 5	44.7%

Number of Facilities Vulnerable to Storm Surge by Category						
Healthcare Facility Type	Total # of Facilities in the County	Cat 1	Cat 2	Cat 3	Cat 4	Cat 5
Assisted Living Facilities	20	6	8	8	9	12
Dialysis Centers	2	0	0	0	0	0
Hospitals	3	1	1	1	1	1
Intermediate Care Facility for Developmentally Disabled	1	0	0	0	0	0
Nursing Homes	8	3	3	3	3	4
Residential Treatment Centers for Children	3	0	0	0	0	0
Residential Treatment Facilities	1	1	1	1	1	1
Total	38	11	13	13	14	17

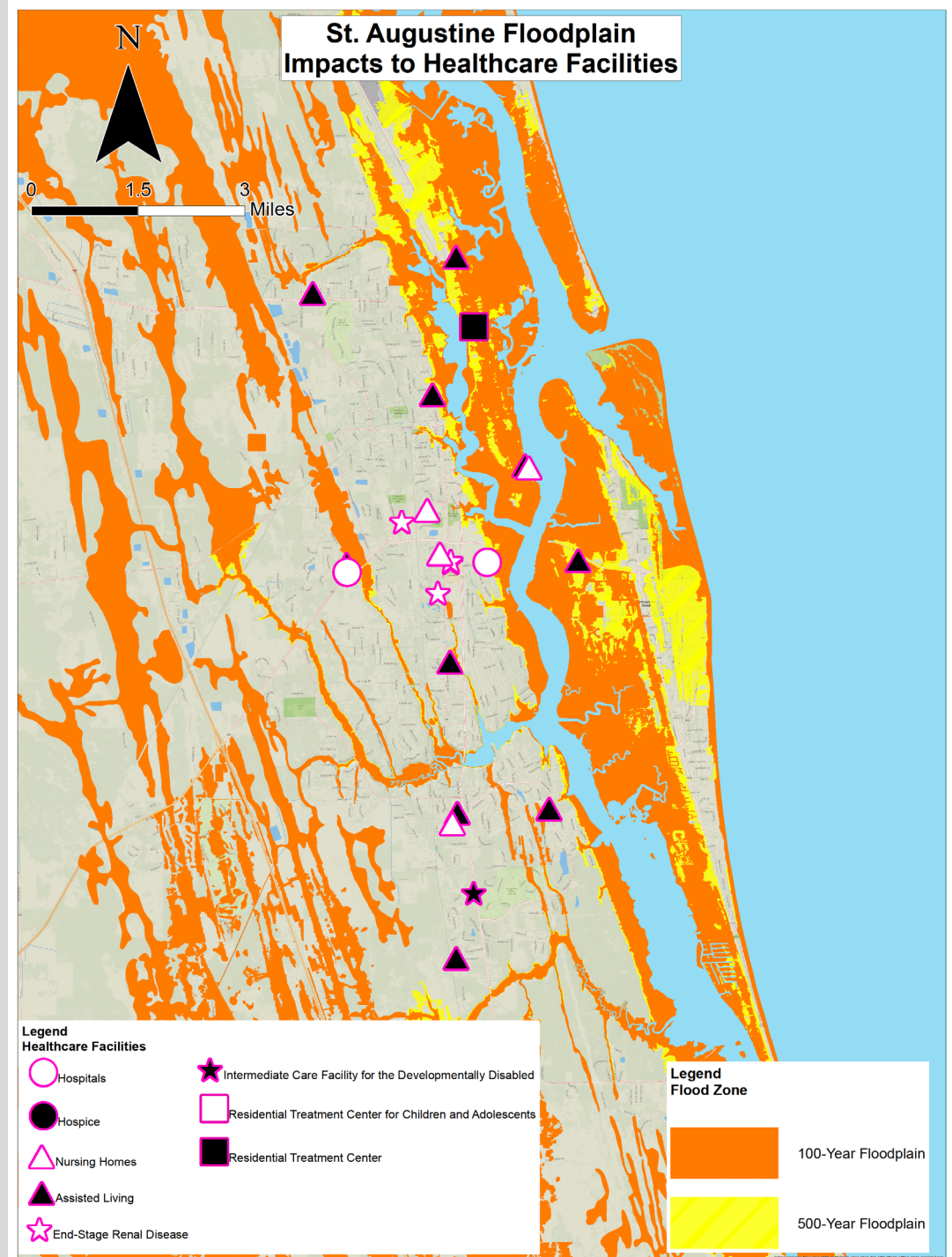
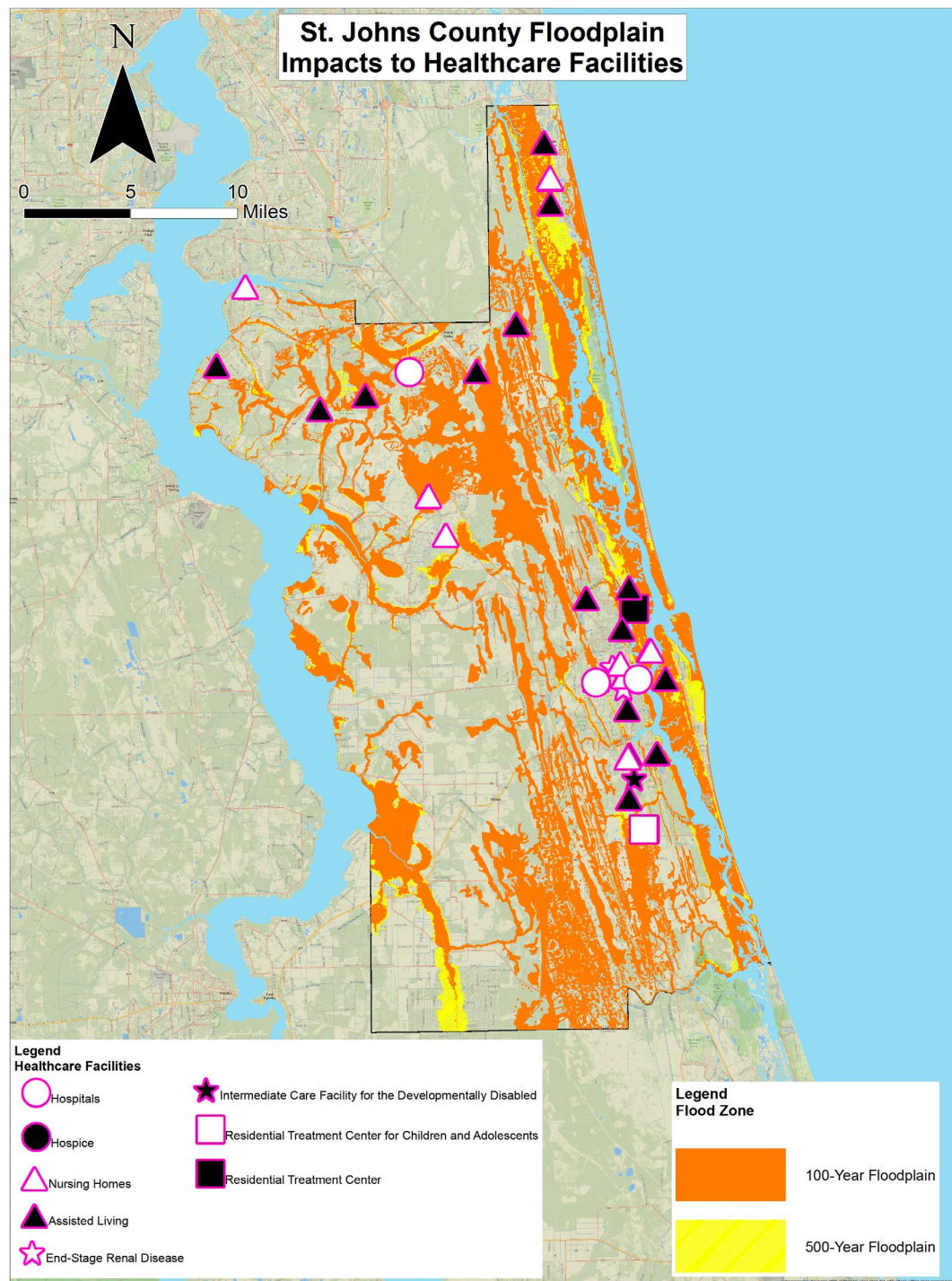


Overland Flooding 100 & 500-year Flood Event Exposure Analysis

Floodplain	100-year	43.2%
Floodplain	500-year	43.2%

In a 100-year and 500-year flood event, half of all the assisted living facilities and nursing homes would be vulnerable to this hazard. One hospital out of three hospitals and the only residential treatment facility would be impacted.

Number of Facilities within Floodplain			
Healthcare Facility Type	Total Facilities in the County	100-year Flood Event	500-year Flood Event
Assisted Living Facilities	20	10	10
Dialysis Centers	2	0	0
Hospitals	3	1	1
Intermediate Care Facility for Developmentally Disabled	1	0	0
Nursing Homes	8	4	4
Residential Treatment Centers for Children	3	0	0
Residential Treatment Facilities	1	1	1
Total	38	16	16



Sea Level Rise - Exposure Analysis

Sea Level Rise	Intermediate Low and Intermediate High 2040 (1ft)	13.2%
Sea Level Rise	Intermediate Low 2070 (2ft)	13.2%
Sea Level Rise	Intermediate High 2070 (3ft)	23.7%

In total five facilities would be exposed to a sea level rise of 1 ft and above. These same five facilities would be impacted by a sea level rise of 2 ft. For a sea level rise of 3 ft, four additional facilities would be impacted, for a total of nine facilities.

Number of Facilities Vulnerable to Sea Level Rise				
Healthcare Facility Type	Total Facilities in the County	1ft (2040)	2ft (2070)	3ft (2070)
Assisted Living Facilities	20	2	2	4
Dialysis Centers	2	0	0	0
Hospitals	3	1	1	1
Intermediate Care Facility for Developmentally Disabled	1	0	0	0
Nursing Homes	8	2	2	3
Residential Treatment Centers for Children	3	0	0	0
Residential Treatment Facilities	1	0	0	1
Total	38	5	5	9

3-Year Delivery with 5 Elements

Year 1:

- Element 1: Climate Risks and Community Vulnerabilities Assessment
- Element 2: Healthcare Infrastructure Map Series & Analysis of Climate Exposure

Year 2:

- **Element 3: Assessment of Healthcare Infrastructure Protection and Resilience (Climate Sensitivity), Healthcare Facility Outreach, and Mitigation Strategies**
- **Element 4: Assessment of Essential Clinical Care Service Delivery, Healthcare Facility Outreach, and Mitigation Strategies**

Year 3:

- Element 5: Complete the North Florida Resiliency Plan for the Health and Medical Lifeline with Community Feedback

Crisis Point: A Virtual Active Threat Exercise

Sponsored by the Region 3 Healthcare Coalition Alliance

Offering 1: May 8, 2023
1:00 - 4:30 PM

**REGISTRATION FULL FOR
OFFERING 1**

Offering 2: May 16, 2023
1:00 PM - 4:30 PM
[Click Here to Register](#)



Participants Include:

Healthcare organizations from the Region 3 Healthcare Coalition Alliance looking to meet their CMS 'Exercise of Choice' requirement.

- Long Term Care
- Nursing Homes
- Skilled Nursing Facilities
- Home Health
- Hospice
- Dialysis
- Assisted Living
- Hospitals
- Others

Exercise Overview:

Join the Region 3 Healthcare Coalition Alliance for a virtual, discussion-based exercise which can be used to meet your CMS 'Exercise of Choice' requirement. The exercise, which will be offered twice, will include an interactive, active threat scenario that features both large and breakout group discussions. Each participating agency will receive a comprehensive After-Action Report and a certificate of participation that can be used to demonstrate compliance.

Once registered, you will be sent a confirmation email containing:

- Information on how to access the exercise documents through the online web portal.
- Information on how to access the exercise through Zoom on your selected date of participation.

Questions? Contact Elaina Huffman at ElainaH@AllClearEMG.com

Statewide Radiation Surge Tabletop Exercise



FLORIDA HEALTH CARE COALITIONS

www.FloridaHCC.org

[Register
Here](#)

When: Wednesday, May 17, 2023,
9 AM to 1 PM (EDT)

Where: Virtual (Zoom)

Who: Hospitals, Emergency Management, EMS, Public Health and Other
Subject Matter Experts & Partners

Why: Test the new Radiation Surge Annex and assess local and regional
capabilities and gaps in responding to a radiological emergency.



Healthcare Coalition Alliance
Region 3





Personal Protective Measures for Biological Events

PER-320

Personal Protective Measures for Biological Events (PPMB) is a one-day course focusing on the challenges faced by first responders and clinical health care professionals in pre-hospital and hospital environments as they deal with personal protective equipment (PPE) needs and potential contamination issues while dealing with highly infectious diseases. The course provides students with an overview of PPE, and includes experiential learning activities on donning and doffing PPE and technical decontamination. Additionally, students review the different types of decontamination.

****This is the same training course, offered in 3 different locations across the region****

June 12, 2023, 9 AM to 4 PM (Lake City)

Lake Shore Hospital Authority, 259 NE Franklin Street, Suite 102, Lake City, FL 32055

[Register Here](#)

June 14, 2023, 9 AM to 4 PM (Jacksonville)

Ascension St. Vincent's Southside, 4201 Belfort Road, Jacksonville, FL 32216

[Register Here](#)

June 16, 2023, 9 AM to 4 PM (Gainesville)

Haven Hospice, 4200 NW 90th Boulevard, Gainesville, FL 32606

[Register Here](#)

Suggested Participants

- Emergency Medical Services
- Law Enforcement
- Public Health
- Public Works
- Healthcare Personnel

CE Credits

- IACET - .08 CEUs
- 8.0 CEUs for Nurses

Prerequisites

- FEMA/SID Number

***Please see the attached guide on instructions to obtain your FEMA/SID Number**

Questions? Please contact:
asieger@NEFRC.org



FEMA SID Guide

FEMA Student Identification (SID)

What is a FEMA SID?

FEMA Student Identification (SID) number is a unique number generated and assigned to anyone who needs or is required to take training provided by a FEMA organization. Your FEMA SID uniquely identifies you throughout the FEMA organization and all of its agencies. The goal is for your FEMA SID to serve as your personal identification number instead of your Social Security Number (SSN) in support of FEMA's effort to decrease/cease the use of SSN for identifying and tracking individuals.

Why do I need a FEMA SID?

A FEMA SID is required to register for and participate in any training provided by FEMA. All FEMA training providers' registration systems and enrollment procedures require a valid FEMA SID. The FEMA SID will serve as your unique identifier and be used to maintain the record of FEMA training you attended.


Do you have a FEMA Student Identification (SID) Number?

To register, go to the [FEMA Student Identification System](#)

Select "Register for a FEMA SID" in the middle of the screen. Follow the instructions and provide the necessary information to create your account. If you are a user with a Personal Identity Verification (PIV) card, enter your FEMA SID and select your certificate and enter your pin.

Forgot your FEMA SID?

If you already have a FEMA SID but forgot it, go to the [FEMA Student Identification System](#) and select the option: "Forgot Your FEMA SID." You will be asked to provide certain information. Your FEMA SID will be emailed to you along with a separate message that will ask you to reset your password.



SAVE THE DATE

TO JOIN REGION 3 HEALTHCARE COALITION ALLIANCE FOR
CAMP CHAOS
A PEDIATRIC SURGE TABLETOP EXERCISE

JULY 25
2023

12:30-4:00PM
LOCATION TO BE DETERMINED

